

LIGHTING FOR ART GALLERIES





INDIX

4 - 5	NEW CONCEPT
6 - 7	BEAM ANGLES - DIMMING
8 - 9	MINE
10 - 11	LUNA
12 - 13	IERI
14 - 15	HF QUALITY OF LIGHT
16 - 17	TEMPERATURE - EXPOSURE
18 - 19	A&W - AMBIENCE
20 - 21	SONO
22 - 23	BA H
26 - 27	LEGEND
30	OFFICES



THE EVOLUTION OF A NEW CONCEPT

The architectural design of art galleries, has evolved from a Beaux-arts style to modern minimalist interiors- a backdrop of stark walls craving frames and canvases, which are highly responsive to any natural light.

Whether the gallery concept is 'urban' or 'heritage' the collaboration of intelligent lighting design together with the calculated manipulation of natural light can create a new physiological dimension and affect the visual perception of an artwork and offer the artist and gallery curator the opportunity to reveal the various layers of the piece, and deliver a full and comprehensive artistic experience of the space exhibits and artworks.

As the exhibits and artworks change so must the respective lighting design of the gallery space. Advanced lighting technology and precision optics, have created numerous opportunities to achieve the desired unique lighting effects.

BEAM ANGLES

A narrow beam angle can be used to accentuate the features of an artwork or sculpture, or highlight a certain pattern on a canvas.

When the proximity of the light to an artefact cannot be re-negotiated, the focus must be on reducing glare and what are often referred to as 'hot spots' of light.

A wider beam angle can solve this issue.



DIMMING

The combination of precise beam angles and light intensity can affect lighting scenarios that dramatise exhibits and create a perception of an artwork or sculpture to be radiating light.

Dimming light is associated with creating a sense of increased intimacy, so the desire for light to become "warmer" as it dims can also be achieved.

As light is dimmed, pupils will dilate and let in more light.

Studies support that an increased pupil results in heightened visual exploration.

Dimming the brightness of the light is a useful tool when exhibiting larger, complex pieces to draw the observer's attention to applied techniques, while increasing the light intensity can compliment brightly coloured artworks.





Body

Projector with cast aluminum light head (integrated driver)
Tilttable vertically 0 - 90°, rotatable horizontally 350°.

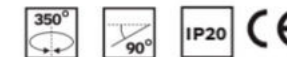
The zoomable lense allow to adjust the beam angle
15° - 45°
15° - 60°.

Ideal to be installed in areas that require flexibility
in showcasing objects such as museum, hospitality and retail.

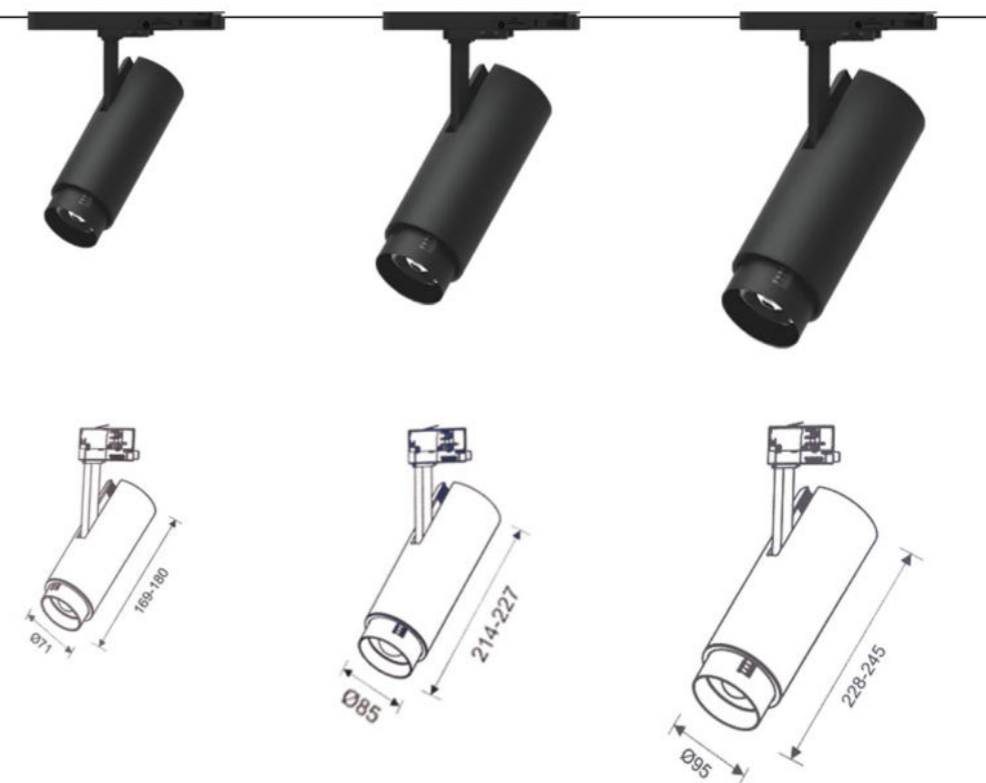
Related products



MINE 20/30/40



MINE 20/30/40



	CODE				LIGHT SOURCE	CCT	>CRI	LED POWER	NOMINAL LUMEN	BEAM ANGLE BA	DRIVER OPTION	FINISH
MINE 20	T-	TR	MI	20	D	30 40	80	18W	1550 1870	15-45°	DO DA DP	10 <input type="checkbox"/>
MINE 30				30		25W		2290 3040	20 <input type="checkbox"/>			
MINE 40				40		33W		2700 3230				



Body

Track mounted spot light with light head in diecast aluminum and front cover in thermoplastic.

Available in 3 different sizes and wattages.

Rotatable horizontally 350° and tiltable vertically 90°. "Solo" is really versatile, suitable for many applications for either commercial and residential projects.



Related products

GLOBE



IERI



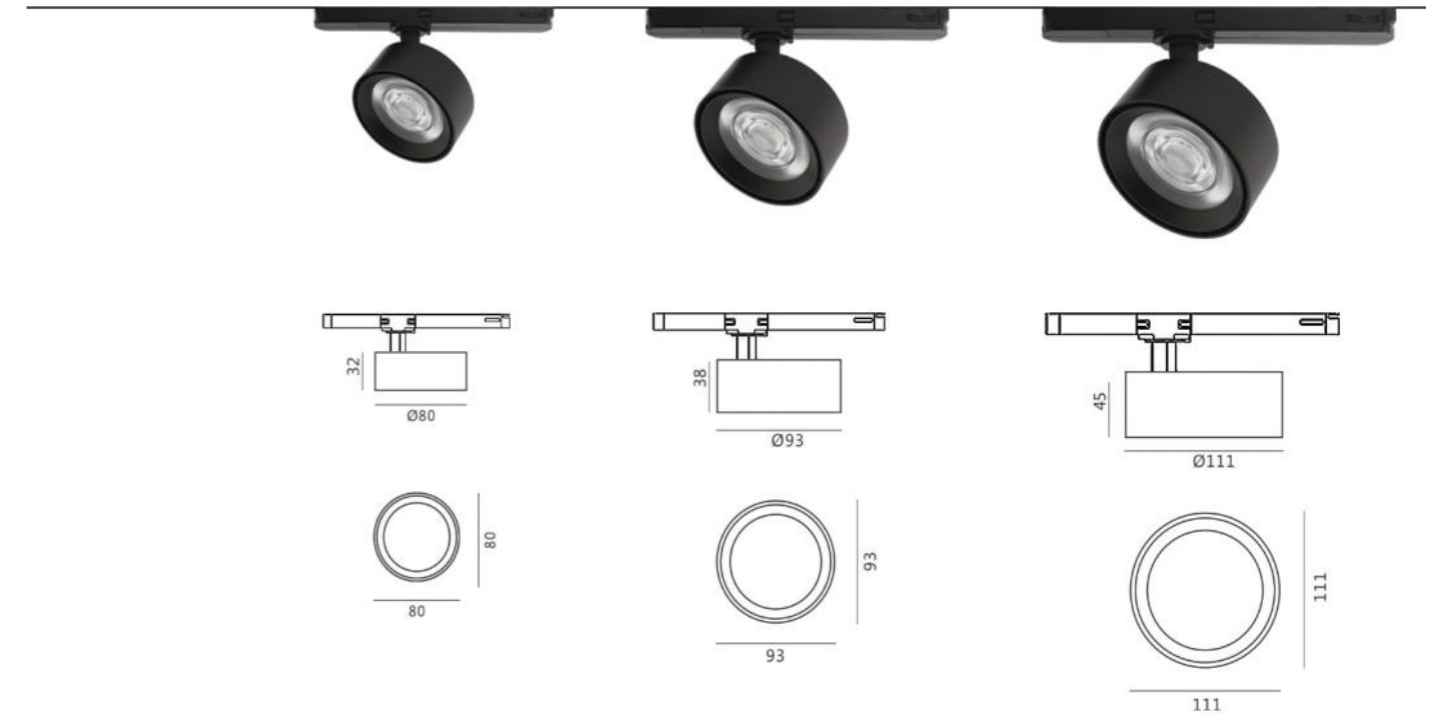
SOLE



LUNA 15/20/28



LUNA 15/20/28



	CODE				LIGHT SOURCE	CCT	>CRI	LED POWER	NOMINAL LUMEN	BEAM ANGLE BA	DRIVER OPTION	FINISH
LUNA 15	T-	TR	LU	15	O	30 40	90	15W	1185	15'	DO	10
									1305	20'		20
LUNA 20				20				20W	1580	15'		
									1740	20'		
LUNA 28				28				28W	2198	12'		
									2320	24'		
										36'		



Body

Track mounted spotlight with die cast aluminum body inclusive of integrated faceted no dazzle louvre in thermoplastic.

Available in 1 or 3 circuits.

Angle tiltable vertically 0 - 90° rotatable horizontally 350°.

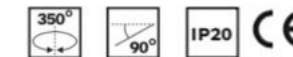
Classic still outstanding design, with an almost total antiglare effect.

Ideal for art galleries, residential, hotel and commercial areas.

Related products



IERI 10/20



	CODE				LIGHT SOURCE	CCT	>CRI	LED POWER	NOMINAL LUMEN	BEAM ANGLE BA°	DRIVER OPTION	FINISH
IERI 10	T-	TR	IE	10	A E	27	80 90	10W	695	15°	DO DA DP DI	10 <input type="checkbox"/>
						30				24°		20 <input type="checkbox"/>
						40				36°		
						50						
IERI 20				20			20W	1411				



THE QUALITY OF LIGHT

Lighting is an essential tool of narration. Art galleries can use lighting to guide the visitor's emotional experience and use a creative play of light and shadow to dramatize a piece, or change the mood of the exhibition and its environment e.g from modern to romantic, and even draw the visitor's eye to a specific detail in a unique artwork or sculpture.

Merely pin-spotting artworks will not build perception or dimension.

The harmonizing of various features of the light, specifically - the light's colour temperature, intensity and beam spread are the small details that will elevate an exhibit.

Since visitors are free to move around the space, in any direction, the light can also be used to re-direct them without interfering with the display.

Part of adjusting the evocative journey of an exhibit requires us to pay attention to the visual comfort of the lighting.

COLOUR TEMPERATURE

Most art galleries will have natural daylight flowing into the space, so it is inevitable that there will be a mix of natural daylight and artificial lighting in the art gallery.

As the natural light will change during the course of the day and season, it is important that their rays should blend well.

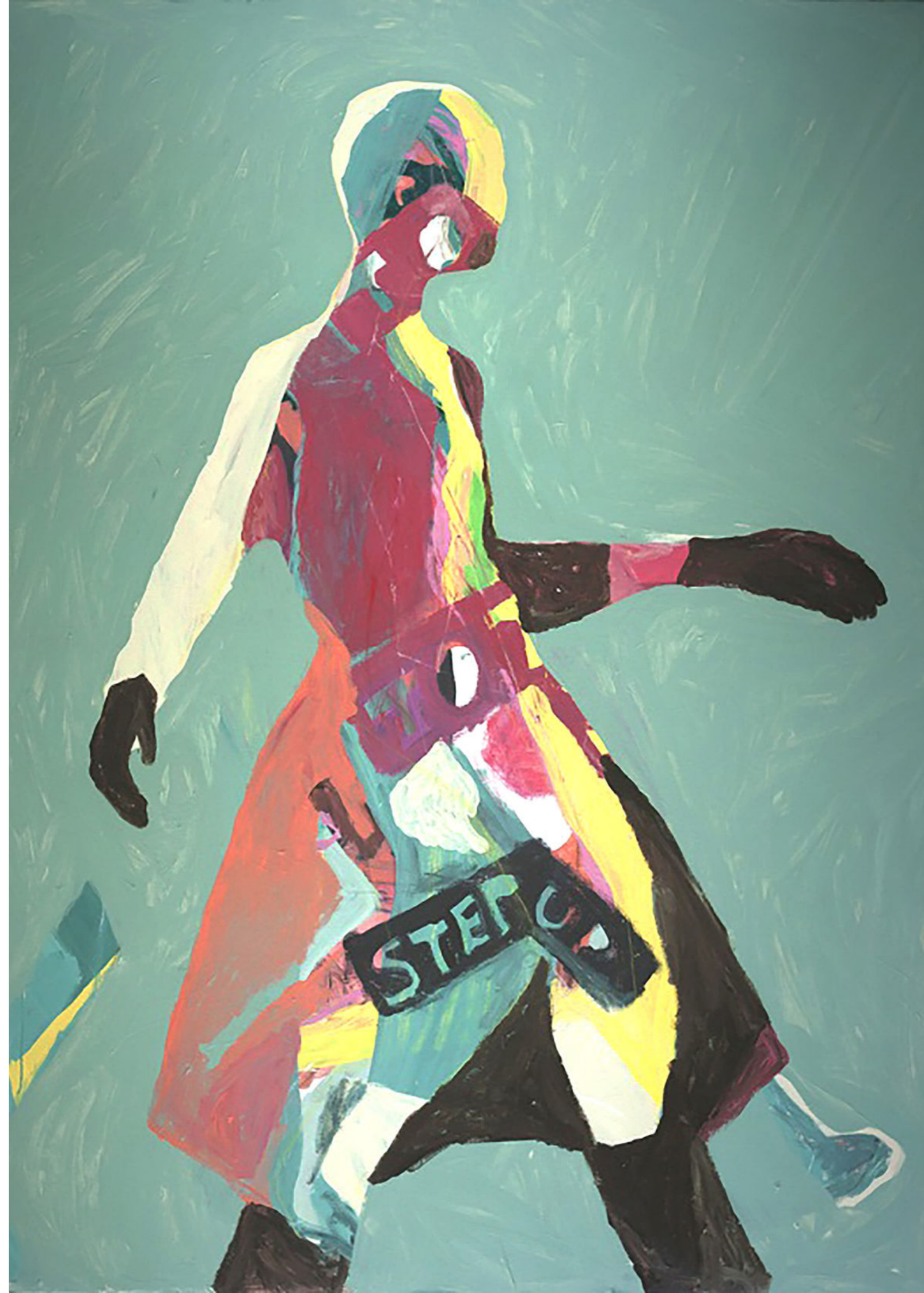
Since the colour rendering in natural daylight is unique and visually preferable, it makes sense to integrate the colour temperature of the artificial light in order to avoid any emotional disconnect from the piece when the collector installs the artwork into its new environment.

To coordinate the colour temperature of the light, by changing the colour temperature, different colours and effects from the same artwork can be observed.

SENSITIVE ENVIRONMENT. PROLONGED EXPOSURE

In general any light-sensitive items should be displayed using discreet, deep-recessed downlights in order to protect the items from UV exposure.

The use of low output spotlights with localised dimming can provide good lighting and still limit the maximum output to 50 LUX, to preserve any conservation items and avoid fading or damage from over exposure.





ACCENT & WASH

Lighting the vertical surfaces of the interior can emphasise the spatial perception of the room, while offering some general lighting. The smooth wall surfaces in art galleries respond well to wall washing and wall grazing.

Wall washing is an ideal solution for effectively lighting an extra large artwork compared to accent lighting with a narrower beam, which is used to draw attention to a particular area and guide the observer's eye to that point.

THE IMPORTANCE OF AMBIENCE

The most common lighting system to facilitate the art gallery's operation, is linear, continuous runs of track, that will usually run the length of the space, and support spotlights to highlight the artworks.

The lighting should all be subject to a control system, to enable preset scenes that reflect the availability of natural light - saving energy where possible, while still preserving the desired atmosphere.



Body

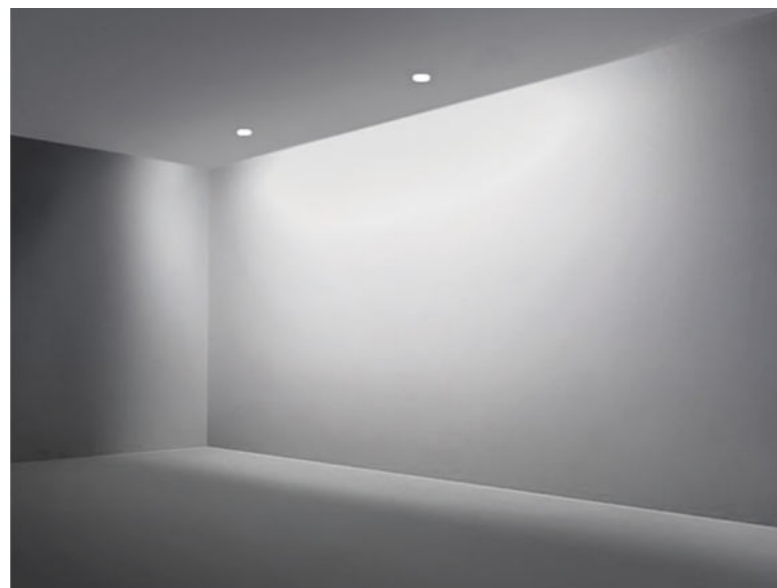
Track mounted wallwasher, with rectangular light head and driver box in cast aluminum.

This powerful track light tiltable vertically 90° and rotatable

horizontally 350° is ideal for hospitality projects as well as for lobbies and conferences spaces.

Available with CRI 95.

SONO is perfect for art galleries and museums.



SONO	CODE			LIGHT SOURCE	CCT	>CRI	LED POWER	NOMINAL LUMEN	BEAM ANGLE BA'	DRIVER OPTION	FINISH
	T	TR	SO								
				LOUMINOUS	27	80	46W	3500	WW	DO	10 <input type="checkbox"/>
					30	90			70'	DA	20 <input type="checkbox"/>
					40	95					



Body

Track mounted spotlight, rotatable horizontally 350° central fixed basic light with polycarbonate diffuser plus 2 independent side luminous heads tiltable vertically and horizontally 350°.

Luminaire body in cast aluminum with integrated faceted screen made in thermoplastic.

Related products

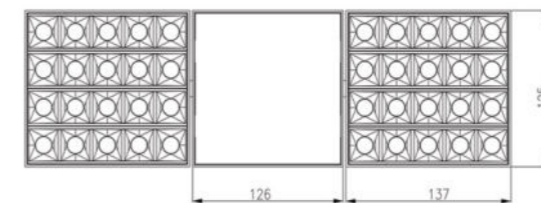
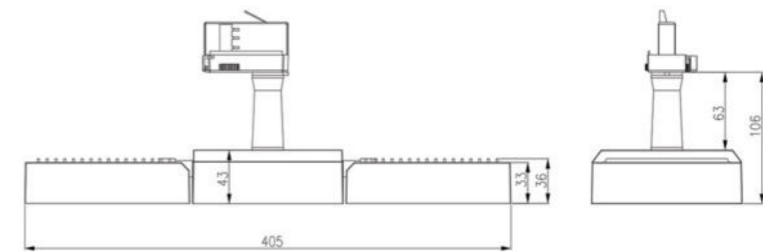
PEPE 20 / 30



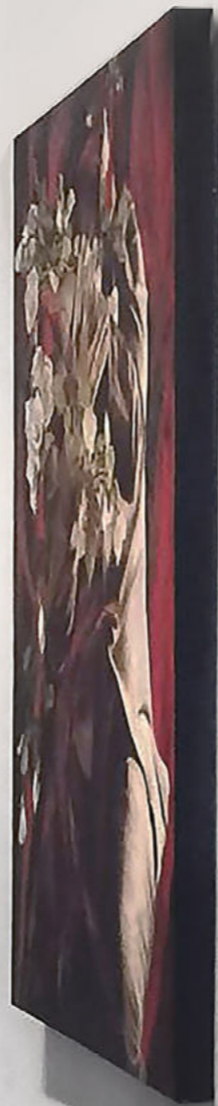
ULTRA



BAT



CODE	LIGHT SOURCE	CCT	>CRI	LED POWER	NOMINAL LUMEN	BEAM ANGLE BA°	DRIVER OPTION	FINISH
BAT	Y	27	80	30+12+30w	4738	15°	DO	10 <input type="checkbox"/>
		30	90			30°		20 <input type="checkbox"/>
		40				45°		





Degree of Ingress Protection



1st Number	Protection Against Dust and Solid Objects	2nd Number	Protection Against Moisture and Liquids
0	No-Protection	0	No-Protection
1	Protection against solid objects >50 mm	1	Protection against dripping water
2	Protection against solid objects >12 mm	2	Protection against dripping water tilted > 15 deg
3	Protection against solid objects >2.5 mm	3	Protection against spraying water > 30 deg
4	Protection against solid objects >1 mm	4	Protection against spraying water
5	Dust - protected	5	Protection against water jet
6	Dust - tight	6	Protection against waves
		7	Protection against the effects of immersion
		8	Protection against submersion

CCT-LED Colour temperature

- 27** Warm White 2700K
- 30** Warm White 3000K
- 40** Neutral White 4000K
- 50** Cool White 5000K

LED CRI

- 80** CRI > 80
- 90** CRI > 90
- 95** CRI > 95

Light Source

- A** Cree
- E** Citizen
- I** Philips
- O** Luminous
- U** Bridgelux
- Y** Osram
- Z** Epistar

Driver Options

- D0** No dimming
- DA** Dali Dim
- DP** Phase
- D1** 0-10 Dim

Body colors

- 10** White
- 20** Black
- 30** Gray
- 40** Out door Black
- 50** Out door Gray
- SS** Stainless



The CE mark signifies that a product conforms with the relevant ECC directives requirements. The CE marking is compulsory to indicate LVD and EMC conformity.

The CE mark is also a self certification that the manufacturer claims that the product is safe, tested in Europe and certified by an independent laboratory that is registered and audited by an approved European testing authority.



OFFICES

EUROPE

T-Luce Italia srl
Viale Giacomo Matteotti 15, Firenze 50121, Italy

saleseurope@t-luce.com
+39 3281425503

MIDDLE EAST

Tecno Hub 2, 2nd floor Office 212,
Dubai, Silicon Oasis (UAE)

salesme@t-luce.com
+971 526627708

ASIA

2263 Pasong Tamo Extension,
Magallanes, Makati City

salesasia@t-luce.com
+632 8893 2403



Address:
T-Luce Italia srl
Viale Giacomo Matteotti 15, Firenze 50121, Italy

Email:
info@t-luce.com

Phone
+39 3281425503

