

AN INNOVATION LEADER  
IN THE LIGHTING WORLD



T·LUCE®



## AURORA TL-LED15 SERIES

The super-thin design of the Aurora series reflects the high-tech sense of the information era. The smooth design on the back with higher self-purification ability, preventing the leaves, accumulation of bird droppings effectively. Multiple installation ways make the installation more flexible. With special design of drop protector, the lamps is more safe when it meet strong wind or impact of poles. The whole lamp adopts the tool free maintenance design make the installation and maintenance safer and faster.

### Key Advantage:

- ☒ Elegant & super- Slim aesthetics
- ☒ Super luminaire efficiency up to 150 lm/w
- ☒ 7 kinds of optics and Advanced thermal management
- ☒ Tool free installation and maintenance
- ☒ UP to ME1 lighting class application
- ☒ Dark sky friendly and no upward light, UP to G6 glare rating.
- ☒ Flexible and intelligent drivers for smart city
- ☒ Low wind area and drop protector
- ☒ IP66 and IK09

### Application:

- ☒ Residential areas
- ☒ Road and street lighting
- ☒ High way, Airport, Parking place
- ☒ Pathway & Pedestrains
- ☒ Smart city option





TL-LED15



TL-LED15A



TL-LED15B



TL-LED15C



# Product features



Electrical connection CLASS A Neutral /Phase are connected to safety switch; for Class B earth wire to be connected on earth stud in housing. 1-10V or DALI incoming wiring is connected to a separate termination block.

Gear with INVENTRONICS /OSRAM driver optional programmable, 1-10V or DALI. SPD and EMI as per request.

Level gauge

SILICON GASKET

Housing is made of very corrosion resistant die-cast aluminum. Polyester powder coated painting after chemical washing treatment.

Mounting with two stainless steel bolts (extra long bolts for small column can be ordered with luminaire).

Spigot made of die-cast aluminium, standard in same color as body. Universal post top / side entry spigot for  $\varnothing$  60mm/76mm/50mm.

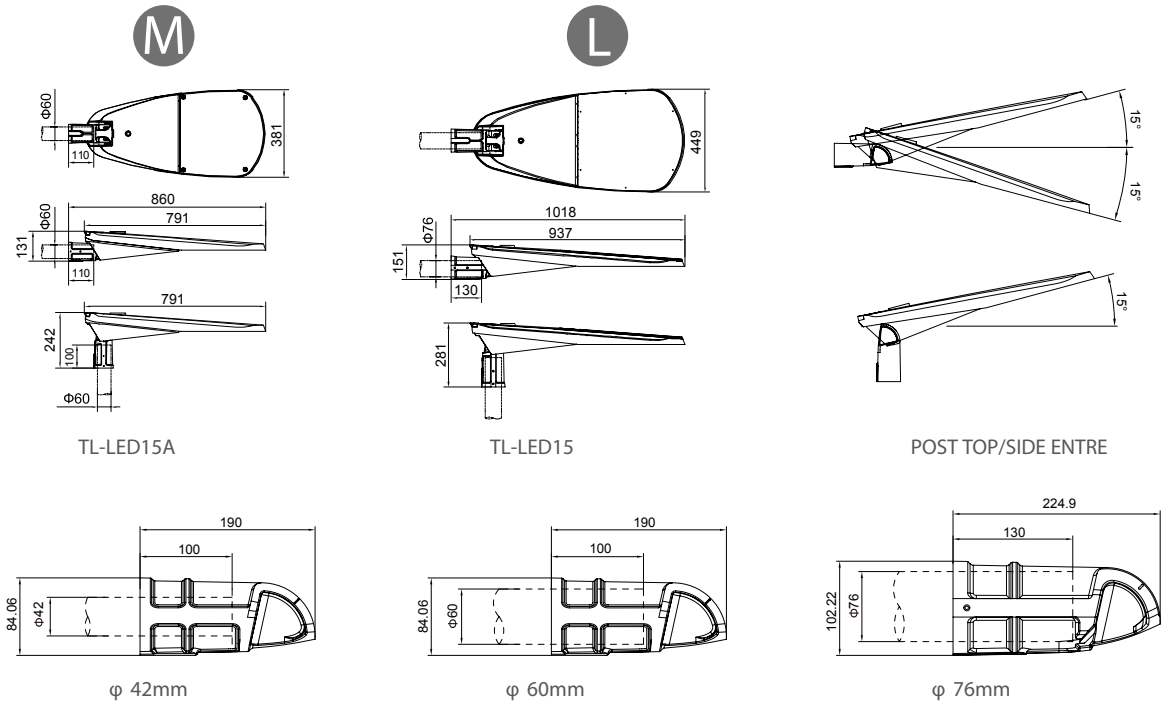
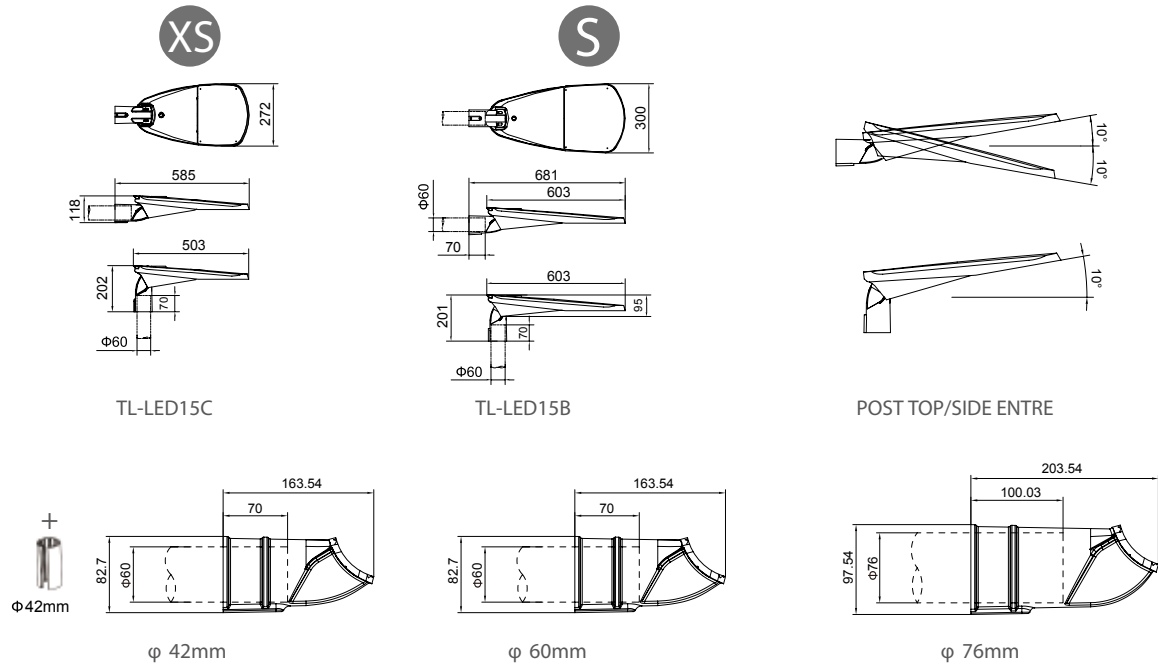
Flat toughened glass to prevent upward light. Fixed to the frame with metal clips for easy replaceability. Very high light transmission to optimise the Light Output Ratio.



Smooth Surface / Self-cleaning



# Product Dimension





MARKET-LEADING EFFICIENCY

LONG-LIFETIME AND DURABLE CONSTRUCTION

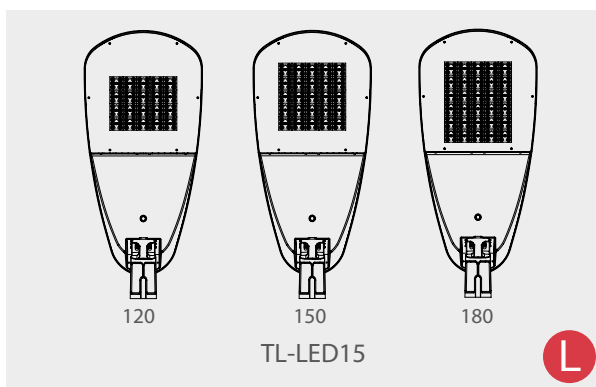
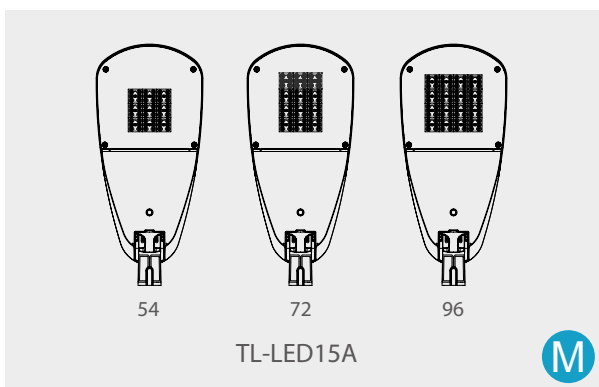
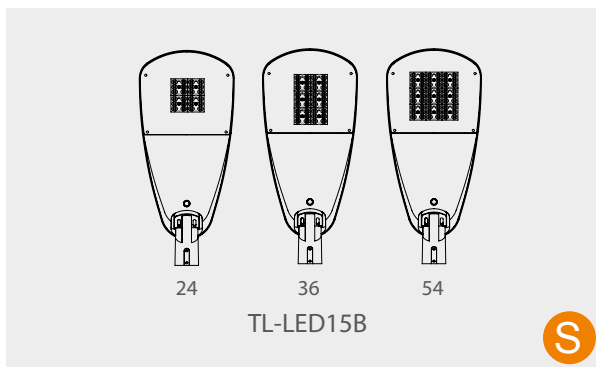
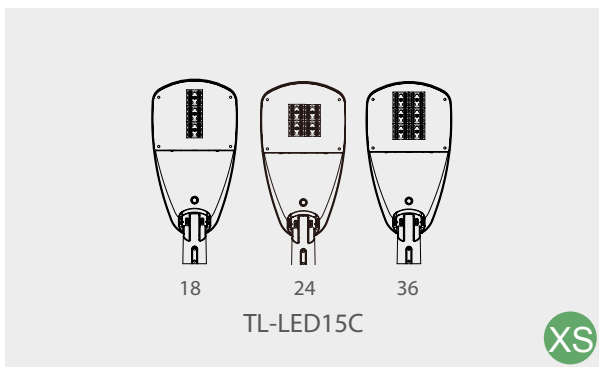
FULL CUTOFF LIGHT DISTRIBUTION (DARK SKY COMPLIANT)

EASY DEPLOYMENT AND TOOL-FREE MAINTENANCE ACCESS



# LED Adapt

## AURORA SERIES



	LEDS	POWER (W) MIN/MAX	LUXEON 5050		L90B10 at 25 IESNA TM-21-11	L70 at 25 IESNA TM-21-11
			MIN(lm)	MAX(lm)		
XS	18	15-30	2250	3900	> 40000hrs	> 100000hrs
	24	20-40	3000	5200	> 40000hrs	> 100000hrs
	36	35-70	5250	9100	> 40000hrs	> 100000hrs
S	24	20-40	3000	5200	> 40000hrs	> 100000hrs
	36	30-60	4500	7800	> 40000hrs	> 100000hrs
	54	50-100	7500	13000	> 40000hrs	> 100000hrs
M	54	50-100	7500	13000	> 40000hrs	> 100000hrs
	72	70-150	10500	19500	> 40000hrs	> 100000hrs
	96	100-200	15000	26000	> 40000hrs	> 100000hrs
L	120	120-240	18000	31200	> 40000hrs	> 100000hrs
	150	150-300	22500	39000	> 40000hrs	> 100000hrs
	180	200-350	30000	45500	> 40000hrs	> 100000hrs



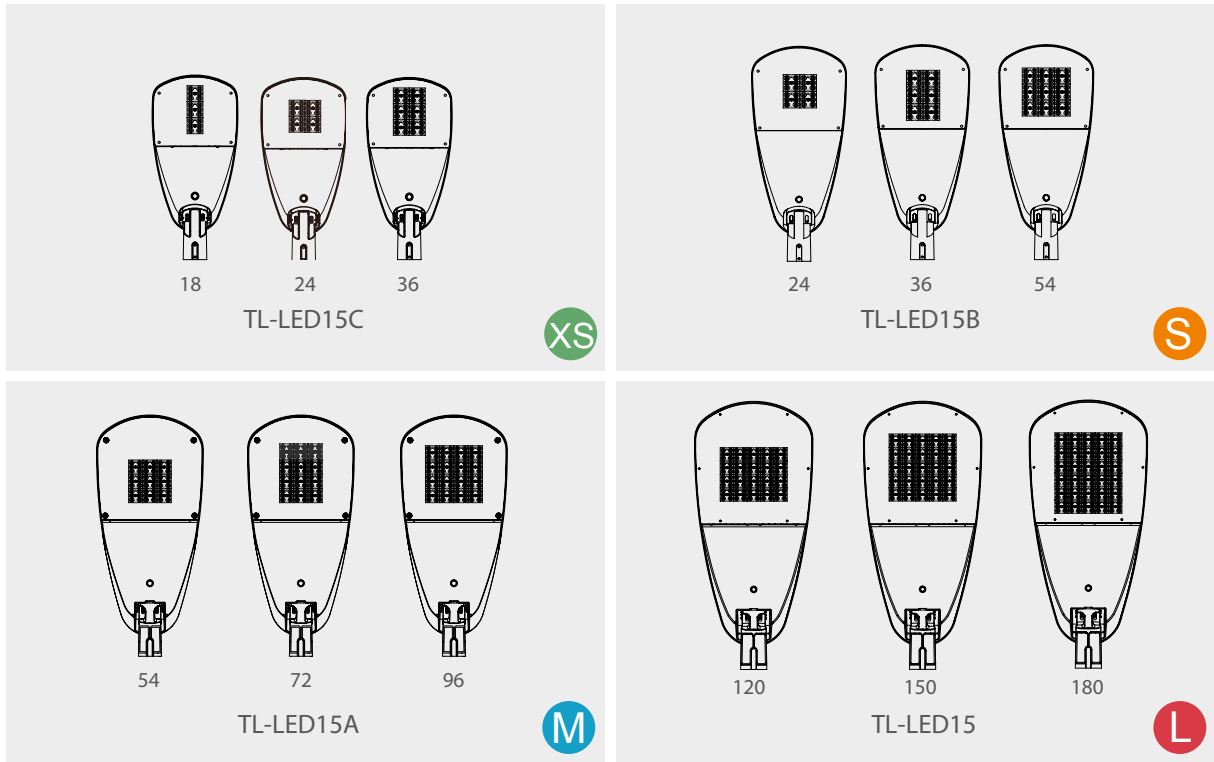
### LUXEON 5050

High efficacy and lumens in a multi-die, high power package, enabling low system costs



# LED Adapt

## AURORA SERIES



	LEDS	POWER (W) MIN/MAX	CREE XP-G		L90B10 at 25 IESNA TM-21-11	L70 at 25 IESNA TM-21-11
			MIN(lm)	MAX(lm)		
<b>XS</b>	18	15-30	1950	3300	> 100000hrs	> 100000hrs
	24	20-40	2600	4400	> 100000hrs	> 100000hrs
	36	35-70	4550	7700	> 100000hrs	> 100000hrs
<b>S</b>	24	20-40	2600	4400	> 100000hrs	> 100000hrs
	36	30-60	3900	6600	> 100000hrs	> 100000hrs
	54	50-100	6500	11000	> 100000hrs	> 100000hrs
<b>M</b>	54	50-100	6500	11000	> 100000hrs	> 100000hrs
	72	70-150	9100	16500	> 100000hrs	> 100000hrs
	96	100-200	13000	22000	> 100000hrs	> 100000hrs
<b>L</b>	120	120-240	15600	26400	> 100000hrs	> 100000hrs
	150	150-300	19500	33000	> 100000hrs	> 100000hrs
	180	200-350	26000	38500	> 100000hrs	> 100000hrs

### Cree® XLamp® XP-G LEDs

The XLamp® XP-G LED delivers unprecedented level of light output and efficacy for a single die LED.



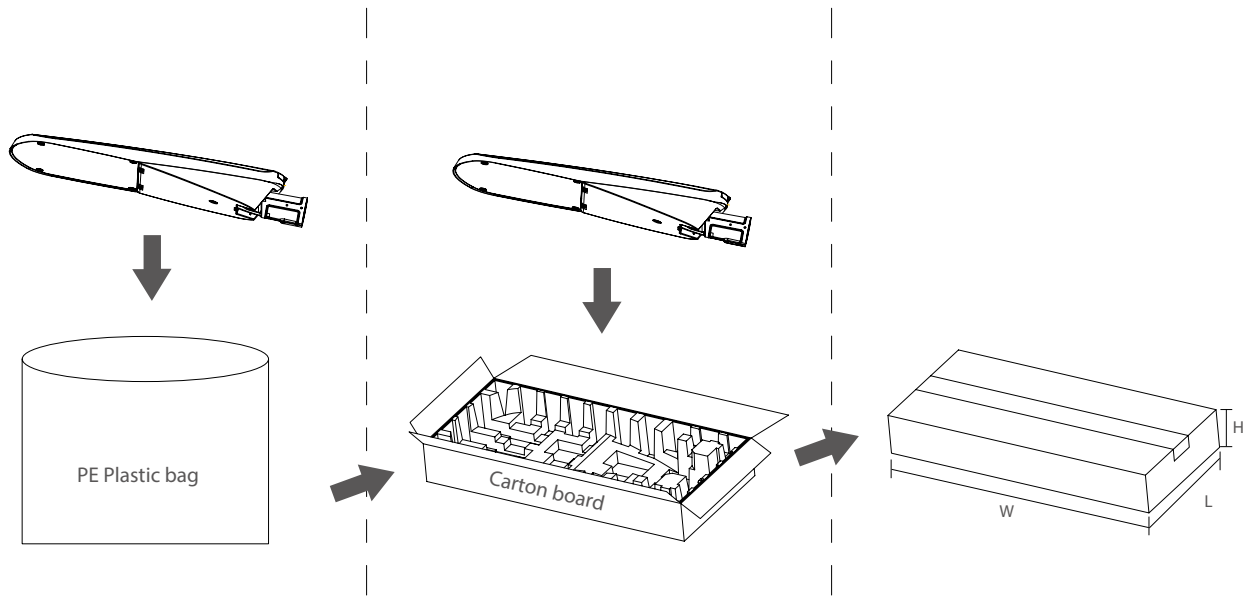


## Product features

PARAMETER	TECHNICAL DATA
Type	AURORA SERIES
Light source	SMD LED Module
Color temperature	4000 K as standard. Optional 2700K, 3000K & 5000K & 5700K. Amber LED available
Color stability	3 or 5 MacAdam steps for all standard LED colors
Color Rendering Index	>70 or >80 (neutral white and cool white)
Luminous Flux (led flux @ Ta=25C outdoor)	from 1800 to 45000 lm
Power	from 10W up to 350W
Luminaire efficiency	130-155 lm/W
Constant lumen output (CLO)	as requirement
Optics Material	PC
Optical Cover	Tempered Glass (5mm)
ULOR (%)	0% for flat glass versions
Spigot diameter	42 mm, 60 mm, 76 mm
Control inputs	DALI, 0-10V, Astro Dim, Step Dim
Electrical class	class I and class II (According to IEC-EN 60598)
Color	RAL7024 as standard (RAL or AKZO Future colors available)
IP rating	IP66
IK rating	IK09 (according to IEC - EN 62262)
Windage M <sup>2</sup>	XS 0.023 / S 0.048 / M 0.058 / L 0.088
Operating temperature range	-40°C < Ta ≤ 50°C
LED module thermal protection	yes
Driver thermal protection	yes
Surge protection	4kV (10kV available as an option)
Options	mini Photocell and NEMA socket, including cable
Certifications	CE CB ENEC(in certification)
Material	ADC12 / Lower copper contents



# Packing Information



Model	Carton Size (mm) L*W*H	QTY / Carton	N.W.(kg)	G.W.(kg)	QTY for Container 20FT	QTY for Container 40HQ
TL-LED15C/60W	635*320*140	1	5.70	6.90	890	2250
TL-LED15B/120W	740*360*150	1	7.90	9.40	650	1650
TL-LED15A/200W	930*445*155	1	12.95	14.75	400	1000
TL-LED15/350W	1080*505*170	1	18.95	20.80	270	700

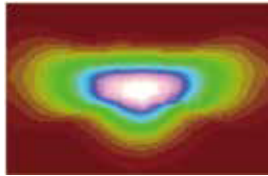
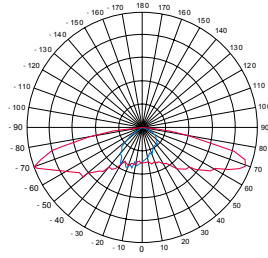




# Optics Available

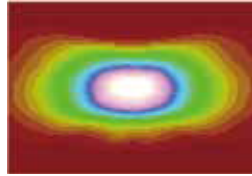
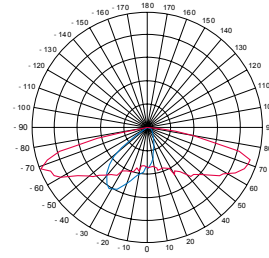
## Street series 2X3

TYPE 1-M



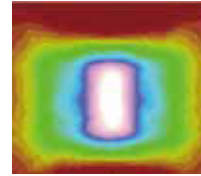
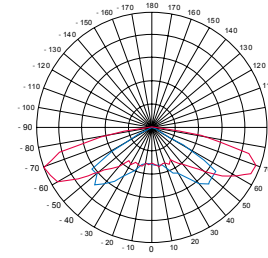
Potential application areas: footpaths, cycle paths, illuminated jogging trails

TYPE 2-M A



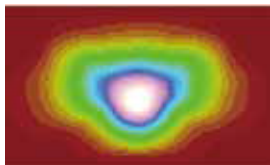
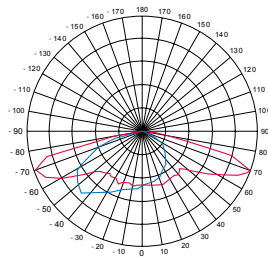
Potential application areas: streets, car parks, high way, fast road

TYPE 2-M B



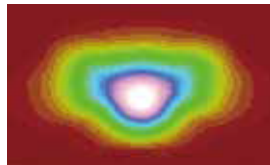
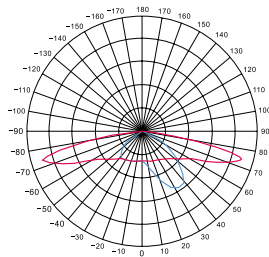
Potential application areas: streets, car parks, Luminous intensity G6

TYPE 3-M

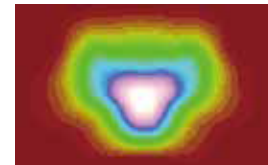
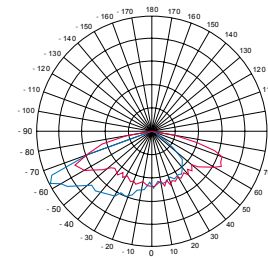


Potential application areas: wide streets, car parks, high way

TYPE 3-L

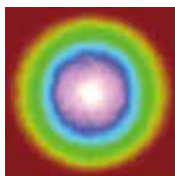
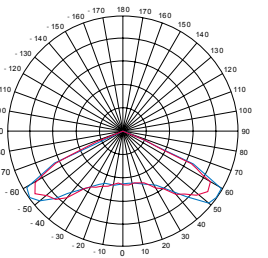


TYPE 4-S



Potential application areas: wide streets, car parks, high way, fast roads

TYPE 5-S



Potential application areas: car parks, airport

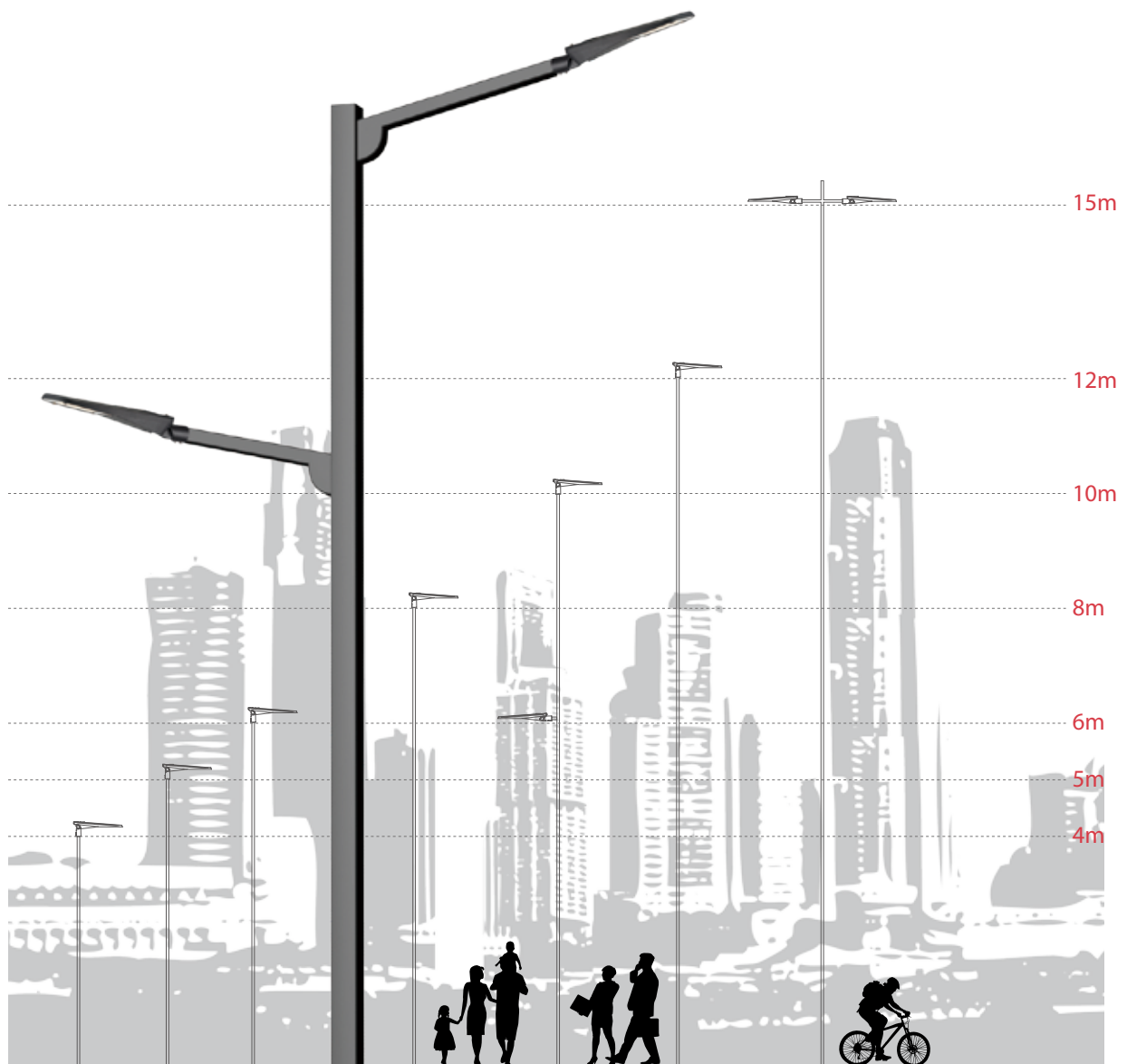


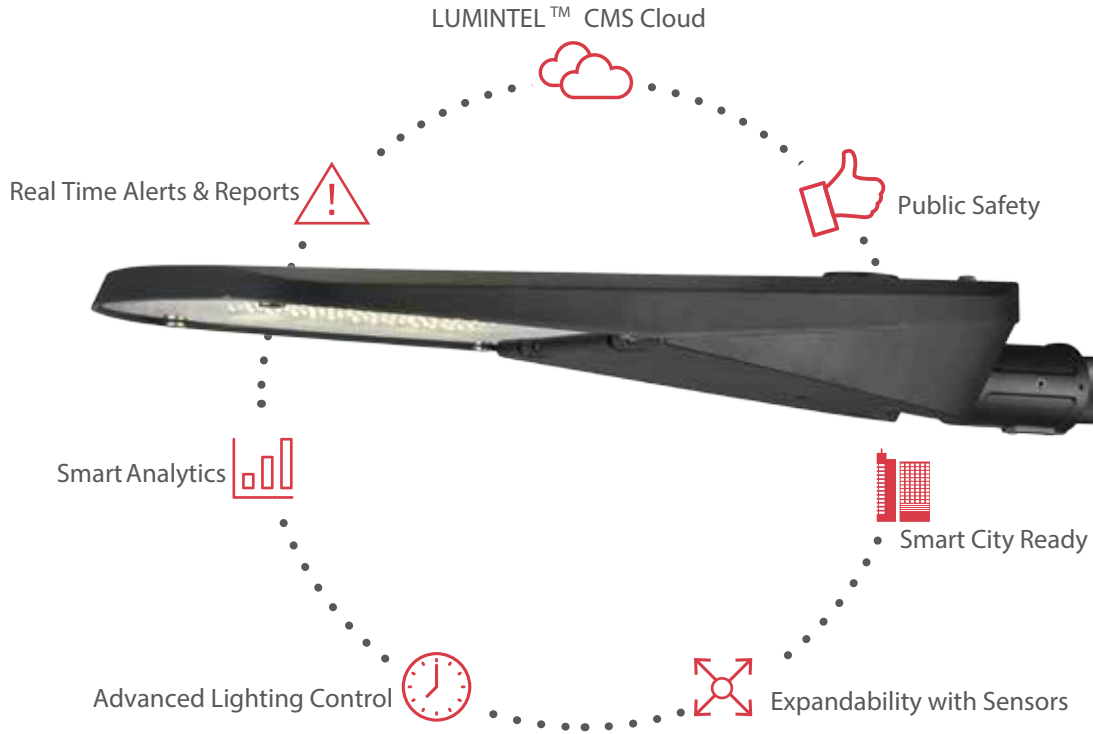


VERSION

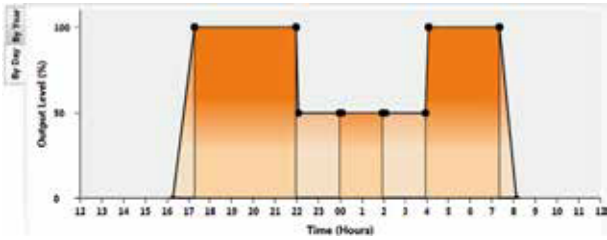
RECOMMENDED MOUNTING  
HEIGHT (METERS)

AURORA XS	3-6M
AURORA S	4-8M
AURORA M	6-12M
AURORA L	12-15M





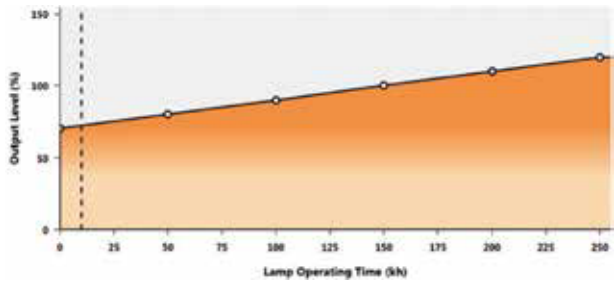
Astro-based AstroDIM



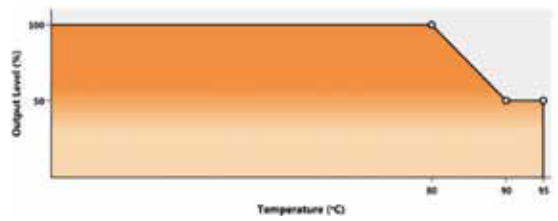
Time-based AstroDIM



Constant lumen programming graph (operating time = 10 kh)



NTC sample behavior





## Surge Protection device

Surge Protection device offers protection against lightning surges;

Voltage Protection level up (L-N)  $\leq 1,5$  kV

Voltage Protection level up (L/N-PE)  $\leq 2,0$  kV

$U_{oc} = 10$  kV

$I_{max} = 10$  kA

$I_{nom} = 5$  kA



## Surge Protection device

Maximum Discharge Current ( $I_{max}$ ) 10kA, 8/20 $\mu$ s

- Meets ANSI C136.2 Enhanced Level 10kV/5kA, IEEE C62.41.2

Location Category C Low Exposure and US Dept. of Energy MSSLC Model Spec.

- Thermally Protected Varistor technology
- Parallel and Series Connected SPD Options
- IP66 Water-proof and Dust-proof



## Shorting Cap

Standard: ANSI C136.10-1996



## Photocell

Standard: ANSIC136.10-2010



## Nema Socket

Standard : ANSI C136.10



## Zhaga Connector

- Contacts rating: 1.5A, 30V (24V typical)
- Meets 10kV dielectric withstand voltage to mounting surface
- 4 pole contacts
- Pin 1: 24Vdc
- Pin 2: DALI (or DALI based protocol) -/common ground
- Pin 3: DALI (or DALI based protocol) +
- Pin 4: General I/O



## Console adapter

Spigot size 60 - 76 mm



## Wall mounting bracket

Spigot size 40 - 60 mm



## Wall mounting bracket

Vertical



## Microwave Motion Sensor

Detailed Product Description

Operating Voltage:120-277Vac, 50/60Hz

HF System:5.8GHz ±75MHz, ISM Wave Band

IP Rating:IP65

Rated Load:120Vac 4A Electronic/magnetic Ballast

277Vac 3A Electronic/magnetic Ballast

Operation Temperature: -25 ~ 55

Function:2 Step /3 Step Dimming/ On Off Function

Mounting Height: 6-15m

Cover Color: Blank Or White

Hold Time: 5s/30s/1min/3min/5min/10min/20min/30min



## Connector

10m cable with IP66 rated connector offers easy installation of the street luminaires.

3 wire cable connector



## Pre-installed cable sets

Pre-installed cables sets in the luminaire

Diameter of the cable:

3 x 1,5 mm - 0,5 m lenght

3 x 1,5 mm - 5 m lenght

3 x 1,5 mm - 6 m lenght

3 x 1,5 mm - 8 m lenght

3 x 1,5 mm - 10 m lenght

3 x 1,5 mm - 12 m lenght

3 x 1,5 mm - 18 m lenght



## Pre-installed cable sets

Pre-installed cables sets in the luminaire

Diameter of the cable:

5 x 1,5 mm - 0,5 m lenght

5 x 1,5 mm - 5 m lenght

5 x 1,5 mm - 6 m lenght

5 x 1,5 mm - 8 m lenght

5 x 1,5 mm - 10 m lenght

5 x 1,5 mm - 12 m lenght

5 x 1,5 mm - 18 m lenght



T-Luce Italia srl  
Viale Giacomo Matteotti 15, Firenze 50121, Italy

info@t-luce.com  
+39 3281425503