



## DRONE TL-DRN-LED27H SERIES

DRONE's distinctive aesthetics is conceived to satisfy any architecture firm and environmental planner. Which is Elegant, pure, clear and timeless that redefines and modernizes the shapes and edges of the city centre and historical districts street lighting.

Super-quality materials used in the DRONE and faultless manufacturing excellence delivers exceptional and reliable performance with minimal maintenance for many years.

Perfectly engineered optical systems and full luminaire precise sizing design, enabling all parts and components in DRONE working efficiently, securing the most reliable package over lifetime and beyond, maximizing its performance and granting colour stability.

### Key Advantage:

- Elegant & modern design
- Symmetrical light and asymmetrical light choice
- Available in multiple lumen choice
- Different installation ways for different poles
- Dark friendly, no up light
- Less glare design, more comfortable

### Application:

- Residential areas
- Road and street lighting
- Highway, Airport, Parking place
- Pathway & Pedestrians
- Smart city option





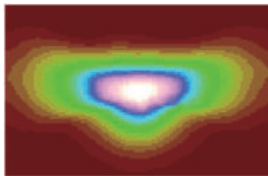
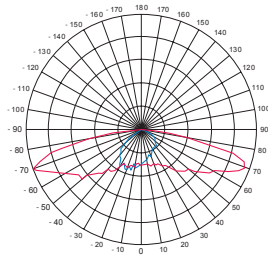
# Product features

PARAMETER	TECHNICAL DATA
Type	DRONE SERIES
Light source	SMD LED Module
Color temperature	4000 K as standard. Optional 2700K, 3000K & 5000K & 5700K. Amber LED available
Color stability	3 or 5 MacAdam steps for all standard LED colors
Color Rendering Index	>70 or >80 (neutral white and cool white)
Luminous Flux (led flux @ Ta=25C outdoor)	from 2100 to 14400 lm
Power	from 15W up to 120W
Luminaire efficiency	120-140 lm/W
Lumen Maintenance (L70)	≥ 100,000 hours
Lumen Maintenance (L90B10)	≥ 40,000 hours
Constant lumen output (CLO)	as requirement
Optics Material	PC
Optical Cover	Tempered Glass (5mm)
ULOR (%)	0% for flat glass versions
Spigot diameter	60 mm, 76 mm
Control inputs	0-10V/DALI
Electrical class	class I and class II
Color	RAL7024 as standard (RAL or AKZO Future colors available)
IP rating	IP66
IK rating	IK09 (according to IEC - EN 62262)
Operating temperature range	-40°C < Ta ≤ 50°C
Driver thermal protection	yes
Surge protection	4kV (10kV available as an option)
Options	mini Photocell and NEMA socket, including cable
Certifications	CE CB ENEC(in certification)
Material	ADC12 / Lower copper contents

# Optics Available

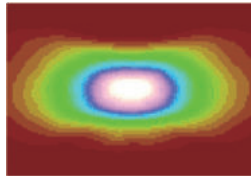
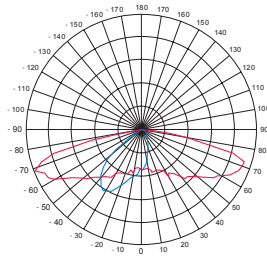
## Street series 2 x 2

TYPE 1-M



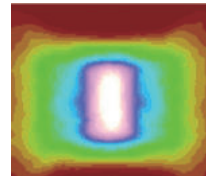
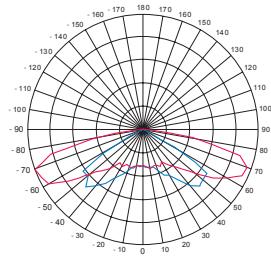
Potential application areas: footpaths, cycle paths, illuminated jogging trails

TYPE 2-M A



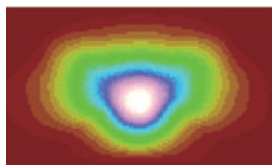
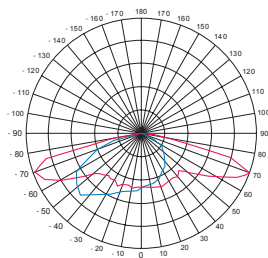
Potential application areas: streets, car parks, high way, fast road

TYPE 2-M B



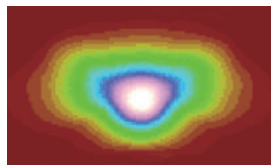
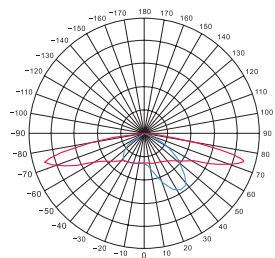
Potential application areas: streets, car parks, Luminous intensity G6

TYPE 3-M

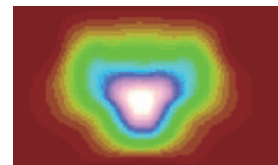
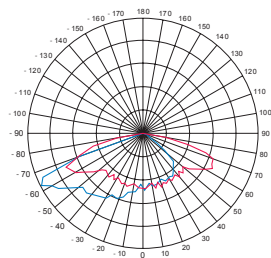


Potential application areas: wide streets, car parks, high way

TYPE 3-L

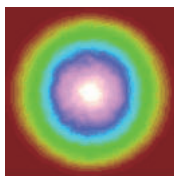
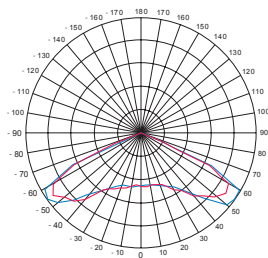


TYPE 4-S



Potential application areas: wide streets, car parks, high way, fast roads

TYPE 5-S

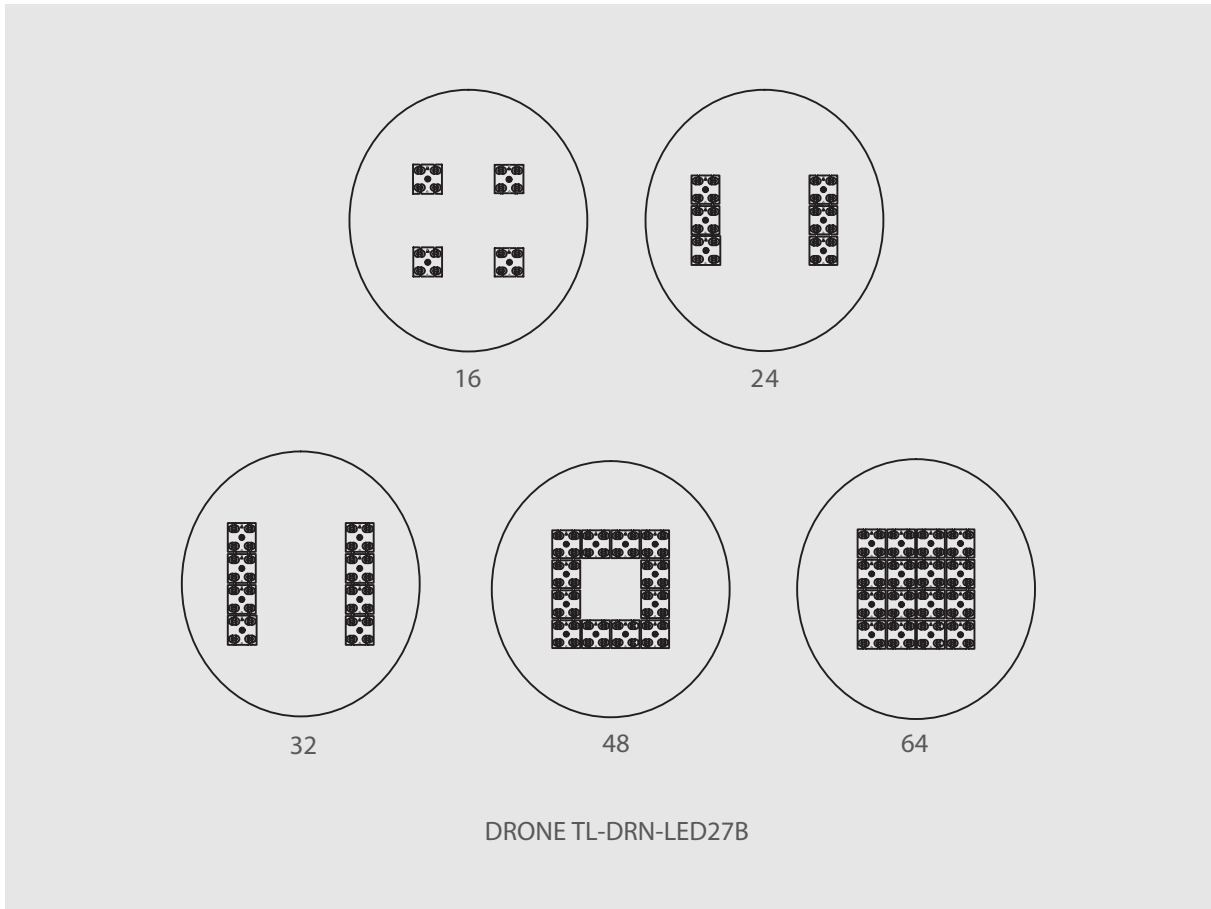


Potential application areas: car parks, airport



# LED Adapt

TL-ARIES SERIES



LEDS	POWER (W) MIN/MAX	LUXEON 5050 MAX(lm)	MIN(lm)	L90B10 at 25 IESNA TM-21-11	L70 at 25 IESNA TM-21-11
16	15-30	2100	3600	> 40000hrs	> 100000hrs
24	20-40	2800	4800	> 40000hrs	> 100000hrs
32	40-80	5600	9600	> 40000hrs	> 100000hrs
48	50-100	7000	12000	> 40000hrs	> 100000hrs
64	60-120	8400	14400	> 40000hrs	> 100000hrs



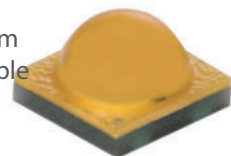
## LUXEON 505

High efficacy and lumens in a multi-die, high power package, enabling low system costs



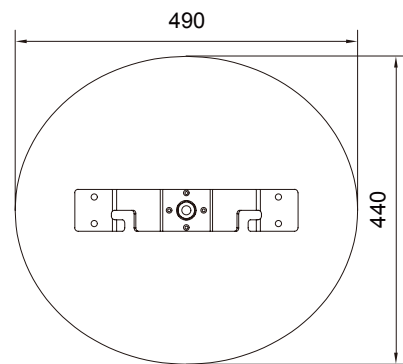
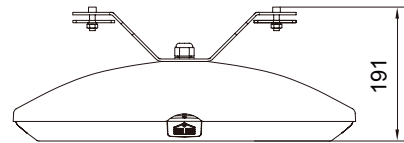
## Cree® XLamp® XT-E LEDs

Optimized for directional, high-lumen applications, from indoor and outdoor to portable and lamp retrofit



## Other Options

DRONE TL-DRN-LED27H



# Accessories Options



## Surge Protection device

Surge Protection device offers protection against lighting surges;  
 Voltage Protection level up (L-N)  $\leq 1,5$  kV  
 Voltage Protection level up (L/N-PE)  $\leq 2,0$  kV  
 $U_{oc} = 10$  kV  
 $I_{max} = 10$  kA  
 $I_{nom} = 5$  kA



## Surge Protection device

Maximum Discharge Current ( $I_{max}$ ) 10kA, 8/20 $\mu$ s  
 • Meets TL-ANSI C136.2 Enhanced Level 10kV/5kA, IEEE C62.41.2  
 Location Category C Low Exposure and US Dept. of Energy MSSLC  
 Model Spec.  
 • Thermally Protected Varistor technology  
 • Parallel and Series Connected SPD Options  
 • IP66 Water-proof and Dust-proof



## Shorting Cap

Standard: TL-ANSI C136.10-1996



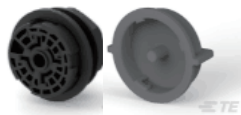
## Photocell

Standard: TL-ANSI C136.10-2010



## Nema Socket

Standard : TL-ANSI C136.10



## Zhaga Connector

- Contacts rating: 1.5A, 30V (24V typical)
- Meets 10kV dielectric withstand voltage to mounting surface
- 4 pole contacts
- Pin 1: 24Vdc
- Pin 2: DALI (or DALI based protocol) -/common ground
- Pin 3: DALI (or DALI based protocol) +
- Pin 4: General I/O



## Microwave Motion Sensor

Detailed Product Description

Operating Voltage:120-277Vac, 50/60Hz

HF System:5.8GHz  $\pm$ 75MHz, ISM Wave Band

IP Rating:IP65

Rated Load:120Vac 4A Electronic/magnetic Ballast

277Vac 3A Electronic/magnetic Ballast

Operation Temperature: -25  $\square$  ~ 55  $\square$

Function:2 Step /3 Step Dimming/ On Off Function

Mounting Height: 6-15m

Cover Color: Blank Or White

Hold Time: 5s/30s/1min/3min/5min/10min/20min/30min



## Connector

10m cable with IP66 rated connector offers easy installation of the street luminaires.

3 wire cable connector



## Pre-installed cable sets

Pre-installed cables sets in the luminaire

Diameter of the cable:

3 x 1,5 mm - 0,5 m lenght

3 x 1,5 mm - 5 m lenght

3 x 1,5 mm - 6 m lenght

3 x 1,5 mm - 8 m lenght

3 x 1,5 mm - 10 m lenght

3 x 1,5 mm - 12 m lenght

3 x 1,5 mm - 18 m lenght



## Pre-installed cable sets

Pre-installed cables sets in the luminaire

Diameter of the cable:

5 x 1,5 mm - 0,5 m lenght

5 x 1,5 mm - 5 m lenght

5 x 1,5 mm - 6 m lenght

5 x 1,5 mm - 8 m lenght

5 x 1,5 mm - 10 m lenght

5 x 1,5 mm - 12 m lenght

5 x 1,5 mm - 18 m lenght



[info@t-luce.com](mailto:info@t-luce.com)  
[www.t-luce.com](http://www.t-luce.com)

IMPORTED & DISTRUBUTED BY:

T-Luce Italia srl  
Viale Giacomo Matteotti 15 - Firenze 50121